

# D I M E N S I O N

The Newsletter of the Los Angeles Chapter of ACM/SIGGRAPH

October 1997

## INSIDE!

◆ Upcoming Conferences *Page 3*

## Upcoming Meetings

◆ Tuesday, November 11, 1997  
L.A.SIGGRAPH Chapter meeting:  
Sending Animation to Remote  
Facilities. A look at various options  
(Internet, ISDN, OC12), compression  
rates, and resolutions.

◆ Call the SIGPHONE, 310-288-1148  
For recorded information on the time  
and location of our next meeting.

## Announcements

◆ Dimension Advertising Specs:  
\$5 per line (~70 char/line)  
1/4 Page (3.75" x 4.75") \$50  
1/2 Page (7.5" x 4.75") \$100  
Full Page (7.5" x 9.5") \$200

### Accepted Media and Formats:

Floppy, e-mail (<10MB), Zip, Jaz,  
Quark, PageMaker, FreeHand,  
Illustrator, Word, Photoshop, TIFF,  
and PICT. Make sure to include all  
linked images and fonts. Macintosh  
format preferred.

Send your ad and check, made  
payable to *Treasurer L.A.SIGGRAPH*,  
via FedEx or messenger to:

Hans Ku  
c/o Walt Disney Feature Animation  
2100 Riverside Drive  
Burbank, CA 91506  
Ads can be accepted via e-mail at  
[Hans\\_Ku@fa.disney.com](mailto:Hans_Ku@fa.disney.com)

◆ The ad submission deadline for  
November's issue is Oct. 13th.

◆ Contact us!  
SIGPHONE: 310-288-1148  
SIGFAX: 310-578-7369  
[Los\\_Angeles\\_Chapter@siggraph.org](mailto:Los_Angeles_Chapter@siggraph.org)  
[www.siggraph.org/chapters/los\\_angeles/](http://www.siggraph.org/chapters/los_angeles/)

L.A. SIGGRAPH PRESENTS AN EVENING WITH

## WALT DISNEY FEATURE ANIMATION AND DREAM QUEST IMAGES

TUESDAY, OCTOBER 14TH

### The Program

6:30-7:30 Social Hour  
7:30-9:00 Program

### The Location

The Alex Theatre  
216 N. Brand Blvd.  
Glendale, CA 91203

### Directions

From the 134 freeway, exit  
Central/Brand Blvd., cross  
Central, then turn right  
(south) at Brand. Continue  
on Brand for 5 blocks. The  
Alex Theatre is on the left  
(east) side.

### Parking

There are three parking  
lots on Maryland between  
Wilson and California. Metered parking in the lots and  
on the street is not enforced after 6:00 PM.

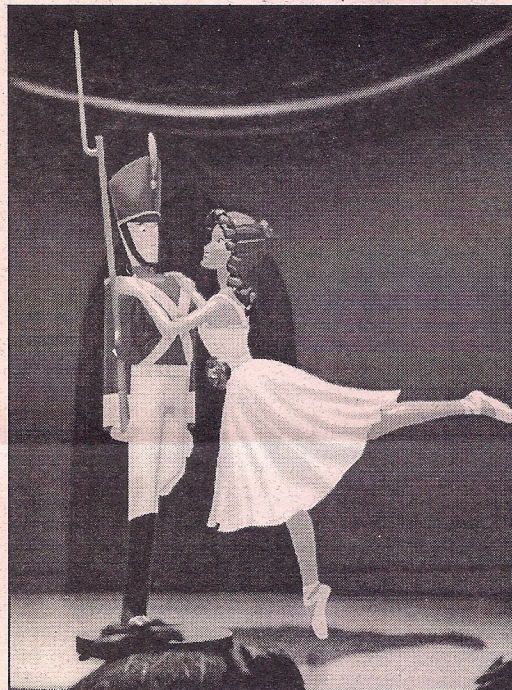
### Fees/Registration

This event is free to L.A. SIGGRAPH members and \$5  
for non-members. New members who sign up on-site  
and pay the \$25 annual membership fee (checks or  
cash only) do not have to pay the \$5 registration fee.

### The Event

The L.A. SIGGRAPH Chapter meeting on October 14th  
will be hosted by Walt Disney Feature Animation and  
Dream Quest Images. They will present recent work  
on *Fantasia 2000* and *George of the Jungle*.

*Fantasia 2000*, a continuation of Walt Disney's 1940  
masterpiece, perpetuates Walt's dream for an ever-  
changing and evolving *Fantasia*. It is comprised of  
three pieces from the original *Fantasia* as well as six  
new sequences which are currently in production at



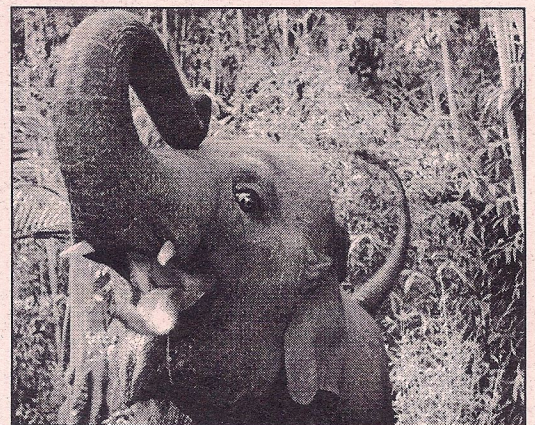
*Tin Soldier, Fantasia 2000*

Walt Disney Feature  
Animation. Through the  
visual pageantry of  
*Fantasia 2000*, Feature  
Animation will again meld  
the world's most memo-  
rable music with anima-  
tion from a new genera-  
tion of Disney artists.

Inspired by Hans Christian  
Anderson's classic tale,  
*The Steadfast Tin Soldier*,  
one of the films new  
sequences, is a love story  
about toys that come to  
life at midnight. This  
sequence features Dmitri  
Shostakovich's *Piano  
Concerto No. 2* with Yefim  
Bronfman as pianist. Don  
Ernst, Producer of

© Disney *Fantasia 2000*, Hendl

Butoy, Supervising Director for *Fantasia 2000*, and  
Steve Goldberg, CGI Lead on *Tin Soldier* will be pre-  
senting.



*Shep, George of the Jungle*

© Disney

Dream Quest Images will cover the development and

See Disney, page 5

# KEYLIGHT STUDIOS

KEYLIGHT STUDIOS, AN INNOVATIVE 3-D ANIMATION & VISUAL EFFECTS COMPANY IS IN SEARCH OF FREELANCE ARTISTS (POSSIBLY LEADING TO STAFF POSITIONS), TO ASSIST IN THE PRODUCTION OF COMMERCIALS, SPECIAL VENUE PROJECTS, AND FEATURE FILMS

- ❖ Minimum 3 years production experience
- ❖ Familiarity with 3-D Studio Max preferred
- ❖ Submit resume and reel to:

KeyLight Studios  
1551 Cardiff Ave.  
Los Angeles, CA 90035  
Attn. Diane Schweitzer  
Ph. 310.556.1332

## Disney, from page 1

creation of 2D and 3D "Shep," the CG elephant in George of the Jungle, Walt Disney Pictures' live action remake of the popular cartoon series.

Dream Quest produced extensive CG character animation to bring to life the computer-generated version of Shep, George's elephant playmate who doggedly believes himself to be a pup. The challenge for Dream Quest's visual effects team was to enhance the live footage of real-life elephant Tai with a large expressive dog-like eye, drooling tongue and wagging tail and seamlessly match the manipulated footage to their fully computer-generated elephant. This CG version of Shep exhibits the comical and impossibly canine mannerisms that even the talented Tai could not perform.

Presenters will be Paul Jordan, 3D Animation Supervisor and Technical Director; David Lauer, 2D Compositing Supervisor and Technical Director; and Bruce Wright, 3D Character Animator.

### Program Coordinators

Isaac Kerlow and  
Ronda Szymanski

### Special Thanks

Paul Yanover  
Mary Reardon  
Doug Eboch  
Steven Clark

## It's more than classes and training. It's a whole environment.

It's an environment of access: Access to classes and seminars. Ample access to workstations for practice days, evenings 'til midnight, and weekends. Access to 3D industry pros as Instructors. Access to book and video libraries. Access to a Lab Assistant and a friendly, supportive staff.

### VIDEO SYMPHONY CLASSES & PROGRAMS

Softimage 3D (a Softimage Academic Partner)  
Softimage Advanced Classes for Professionals  
Softimage Toonz  
Lightwave 3D (Authorized Training Center)  
Avid Media Composer  
(the largest Avid-certified Education Center in the world)  
DigiDesign ProTools (Authorized Training Center)  
Adobe After Effects & Photoshop (Adobe Learning Provider)  
Media 100 (the first Media 100 Authorized Training Center)  
mTropolis

Dimension 3D is a division of

**Video  
Symphony**

1701 Verdugo, Burbank, CA 91506  
www.videosymphony.com

Dimension  
3D

### 3D ANIMATION PRODUCTION & SOFTIMAGE 3D TRAINING

Ten weeks of intensive class instruction & lab.

36 hours PER WEEK lab time in addition to formal classroom instruction.

20 full days of formal classroom instruction by production-savvy professional 3D animators who are highly experienced in the film and entertainment industry.

A Lab Assistant available from 9 a.m. to midnight and weekends to answer questions.

State of the art equipment, classrooms and lab / Windows NT & SGI & Mac.

Weekly consultation sessions with an Instructor about your first demo piece - "Project One."

Accessible tuition.

Contact SALLY O'STEEN at (818) 559-4272